



HLA-H Polyclonal Antibody

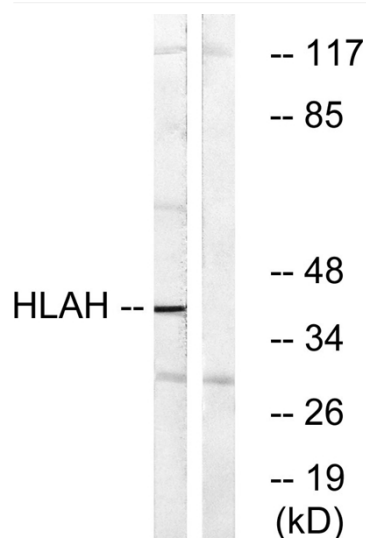
Catalog No	YP-Ab-13932
Isotype	IgG
Reactivity	Human
Applications	WB;ELISA
Gene Name	HLA-H
Protein Name	Putative HLA class I histocompatibility antigen alpha chain H
Immunogen	The antiserum was produced against synthesized peptide derived from human HLAH. AA range:71-120
Specificity	HLA-H Polyclonal Antibody detects endogenous levels of HLA-H protein.
Formulation	Liquid in PBS containing 50% glycerol, 0.5% BSA and 0.02% sodium azide.
Source	Polyclonal, Rabbit,IgG
Purification	The antibody was affinity-purified from rabbit antiserum by affinity-chromatography using epitope-specific immunogen.
Dilution	Western Blot: 1/500 - 1/2000. ELISA: 1/10000. Not yet tested in other applications.
Concentration	1 mg/ml
Purity	≥90%
Storage Stability	-20°C/1 year
Synonyms	HLA-H; HLAH; Putative HLA class I histocompatibility antigen; alpha chain H; HLA-12.4; HLA-AR; MHC class I antigen H
Observed Band	40kD
Cell Pathway	Cell membrane ; Single-pass membrane protein .
Tissue Specificity	Platelet,
Function	caution:Could be the product of a pseudogene.,function:Involved in the presentation of foreign antigens to the immune system.,similarity:Belongs to the MHC class I family.,similarity:Contains 1 Ig-like C1-type (immunoglobulin-like) domain.,subunit:Heterodimer of an alpha chain and a beta chain (beta-2-microglobulin).,
Background	This major histocompatibility complex gene represents a transcribed pseudogene, possibly derived from HLA-A. This gene displays extensive variation. [provided by RefSeq, May 2010],
matters needing attention	Avoid repeated freezing and thawing!



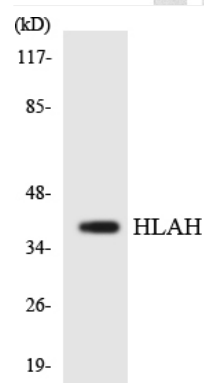
Usage suggestions

This product can be used in immunological reaction related experiments. For more information, please consult technical personnel.

Products Images



Western blot analysis of lysates from LOVO cells, using HLAH Antibody. The lane on the right is blocked with the synthesized peptide.



Western blot analysis of the lysates from HT-29 cells using HLAH antibody.